

1. CUSTOM CLEANING

● Pro-Skin Care Silicone Brush

Introduction

16-levels of cleaning intensity gives you the most comfortable and personalized cleaning experience while keep your skin fresh.



2. MICRO BUBBLES SKIN CLEANSING

● Pro-Skin Care Silicone Brush

Introduction

“Multi-sonic” multi-pole pulse mode allows water molecules to produce tiny bubbles that carry away stubborn impurities and leave your skin hydrated and rejuvenated.

Level1 | **Gentle** – Soft and delicate bubbles

Level2 | **Refresh** – Refreshing accelerated bubbles

Level3 | **Intense** – Activated rising bubbles



3. TIGHTENING & LIFTING

● Pro-Skin Care Silicone Brush

Introduction

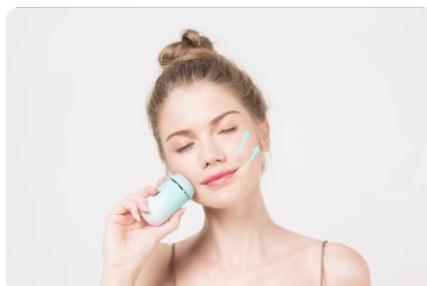
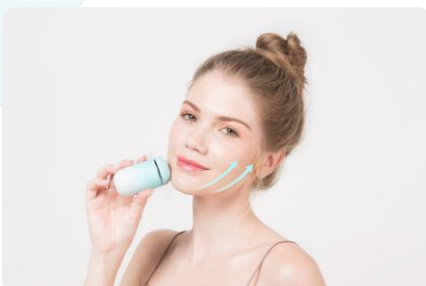
Massage your face and body using the diamond veneer texture on the side of the brush head. It helps to remove edema, clear the lymph, and tighten the skin lines.

Level1 | **Relieve - Soothing and relaxing**

Massage Method

Face: gently push up from the chin to temple and forehead;

Around the eyes: Gently massage the area around the eyes.



Level2 | Massage - Body Massage

Massage Method

Slowly pull from the lower part of collar bone area



Level3 | Kneading & Lifting

Massage Method

Push up side of your neck



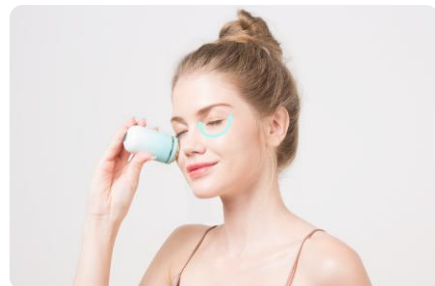
4. EYE CARE

● Golden Massage Head

Suitable for - around the eyes (Eye bags & Corner of eyes)

Massage Method

After moisturizing, gently massage the corresponding areas around the eyes with the metal of brush head, it can effectively reduce dark circles, tighten eye bags, and improve fine lines.



5. SKIN CARE

● Golden Massage Head

Suitable for - Face

The frequency of the Multi-sonic technology can reach 1000Hz and assist in the absorption of essence effectively. It can be used with a variety of brush heads.

Massage Method

Massage the entire face when you are applying mask or using skin care essence. This will help nutrients to penetrate deeper into the skin, improve cell metabolism, promote blood circulation, and make your skin look smoother and more elastic.

